

## FRAGMENTED BIODIVERSITY: FERNS AND LYCOPHYTES FROM FOREST FRAGMENTS IN JUIZ DE FORA, MINAS GERAIS, BRAZIL

*Lucas Vieira Lima<sup>1,2</sup>*  
*Vinícius Antonio de Oliveira Dittrich<sup>3</sup>*  
*Filipe Soares de Souza<sup>1</sup>*  
*Cassiano Ribeiro da Fonseca<sup>4</sup>*  
*Alexandre Salino<sup>1</sup>*

Recebido 20.11.2020; Aceito 04.01.2020

### ABSTRACT

The Atlantic Forest is one of the most threatened formations in the world. In this context, the urbanization process stands out as one of the major factors causing environmental degradation, mainly due to the loss of native vegetation and habitat destruction. In order to fill this gap, we carried out the inventory of ferns and lycophytes in the forest remnants of the municipality of Juiz de Fora. We analyzed more than 1,353 samplings recorded throughout approximately 150 years, as result we recorded a total of 174 species distributed in 73 genera and 26 families. The most representative families were Pteridaceae with 32 species, followed by Polypodiaceae with 26 and Thelypteridaceae with 20. In addition, we present the historical data on the sampling of ferns and lycophytes, as well as the history of the fragmentation process of the Atlantic Forest remnants in the municipality. Juiz de Fora becomes an interesting model for broader floristic studies, generating subsequent subsidies for conservation actions and preservation of the natural patrimony.

**Key words:** Atlantic forest, pteridophytes, Semideciduous Seasonal Forest,

### RESUMO

A Floresta Atlântica é um dos domínios mais ameaçados do planeta. Neste contexto, o processo de urbanização configura-se como um dos maiores fatores causadores da degradação ambiental, fundamentalmente pela extinção da vegetação nativa e destruição de habitats. Visando contribuir para o preenchimento desta lacuna, foi realizado o inventário das samambaias e licófitas nos remanescentes florestais do município de Juiz de Fora. No total, foram analisados mais de 1353 registros de coletas realizadas no intervalo de aproximadamente 150 anos. Foram registradas 174 espécies, distribuídas em 73 gêneros e 26 famílias. As famílias mais representativas foram Pteridaceae com 32 espécies, seguida de Polypodiaceae com 26 e Thelypteridaceae com 20. Adicionalmente, são apresentados dados históricos de coletas de samambaias e licófitas, bem como o histórico da fragmentação dos remanescentes de Floresta Atlântica no município. Deste modo Juiz de Fora torna-se um interessante modelo para estudos florísticos mais amplos, gerando assim posteriores subsídios para ações de conservação e preservação do patrimônio natural da humanidade.

**Palavras-chave:** Floresta Atlântica, Pteridófitas, Floresta Estacional Semidecidual

<sup>1</sup> Departamento de Botânica, Instituto de Ciências Biológicas, Universidade Federal de Minas Gerais. Av. Presidente Antônio Carlos, 6627-Pampulha, CEP 31270-901, Belo Horizonte, MG, Brazil

<sup>2</sup> Corresponding Author: lucaslima1618@gmail.com

<sup>3</sup> Departamento de Botânica, Instituto de Ciências Biológicas, Universidade Federal de Juiz de Fora, Rua José Lourenço Kelmer, s/n - Campus Universitário, São Pedro, CEP 36036-900, Juiz de Fora, MG, Brazil.

<sup>4</sup> Núcleo de Biologia, Instituto Federal de Educação, Ciência e Tecnologia do Sudeste de Minas Gerais, Campus Juiz de Fora, Rua Bernardo Mascarenhas, 1283-Bairro Fábrica, CEP: 36080-001, Juiz de Fora, MG, Brasil.

## INTRODUCTION

Ferns and lycophytes are two distinct lineages of seedless vascular plants, sharing a life cycle in which the gametophytic phase is independent from the sporophytic one (Page, 1979; PPG I, 2016). In a recent review of the classification of ferns and lycophytes (PPG I, 2016), it has been estimated that there are 11,916 species. One of the main centers of diversity and endemism is the neotropical region (Moran 2008), with much of the species richness and endemism associated with the mountains of southeastern Brazil, Mexico, and the Andes (Tryon, 1972; Moran 2008).

Almeida & Salino (2016) demonstrated that, despite the current favorable scenario for the use of new molecular and computational techniques in systematic and biogeography studies, there is still a large gap in the knowledge about the diversity of groups of ferns and lycophytes. Among the factors related to the lack of knowledge about the diversity and patterns of geographic distribution of ferns and lycophytes, the main ones are the degradation, fragmentation and destruction of habitats in megadiverse neotropical countries such as Brazil (Almeida & Salino, 2016; Cincotta *et al.*, 2000; Meyer *et al.*, 2000).

The Atlantic Forest domain is an important set of ecosystems with high levels of endemism and richness (Myers *et al.*, 2000; Stehmann *et al.*, 2009), considered as one of the 34 global biodiversity hotspots (Mittermeier *et al.*, 2004). Due to a long history of exploitation and degradation, currently only 7-8% of the original coverage remains (Galindo-Leal & Câmara, 2005). More recent studies using remote sensing methodologies with a resolution of 5 km<sup>2</sup> demonstrated the recovery of vegetation cover in the Atlantic Forest, reaching 28% of the original coverage (Rezende *et al.*, 2018). However, these remaining areas are constituted by mosaics of small and biologically impoverished fragments, on average smaller than 100 ha, whose restoration could take hundreds of years (Liebsch *et al.*, 2008; Ribeiro *et al.*, 2009, 2011).

The Seasonal Semideciduous Forest (SSF) is today restricted to a mosaic of forest fragments at different stages of regeneration (Whitmore, 1978; Ferreira Júnior *et al.*, 2007), contrasting with its wide past distribution. According to Stehmann *et al.*, (2009), this formation is the second most important in terms of plant richness and endemism in the Atlantic Forest domain. For fern and lycophyte species, 48% (406 spp.) of the total recorded for the Atlantic Forest (840 spp.) occur at SSF, of which about 33% (89) of them are endemic to the formation (Salino & Almeida, 2009a).

The municipality of Juiz de Fora, located in the southeastern portion of the state of Minas Gerais, is predominantly under the domain of the Semideciduous Seasonal Forest (Lima & Dittrich, 2016; PMJF, 2017). The native forest cover was almost completely destroyed, initially by opening up areas for agricultural activities, with emphasis on the coffee culture, later transformed into pasture areas, mainly of molasses grass (*Melinis minutiflora* P. Beauv.) and more recently palisade or signal grass (*Urochloa* spp.). The few remaining forest fragments are represented mainly by secondary formations in different succession stages (Almeida, 1996).

In addition, the constant anthropic pressures in response to the increased demands of the human population constitute an imminent threat to the maintenance of biodiversity (Almeida & Salino, 2016). In the last 20 years, the population of Juiz de Fora has grown by around 24%, reaching approximately 560 thousand inhabitants (IBGE 2016). The municipality currently has about 28 thousand hectares of native vegetation cover, which represent approximately 20% of its territory (Scolforo & Carvalho, 2006; Fonseca & Carvalho, 2012). However, only 4% of these forested areas are under protection in conservation units (Fonseca & Carvalho, 2012; PMJF, 2017).

The long history of exploitation and degradation to which the municipality's vegetation is subjected and its importance in the representativeness of the Atlantic Forest fragments make it essential to carry out inventories of the flora of this area. In this context, the present study had as its main objective carrying out the inventory of ferns and lycophytes of the forest fragments in Juiz de Fora.

## MATERIALS AND METHODS

We reviewed all specimens of ferns and lycophytes from the studied area deposited in the BHCB and CESJ herbaria (acronyms according to Thiers, 2020). In addition, we consulted and reviewed the identifications of specimens with images available in the following virtual herbaria: INCT- Herbário Virtual da Flora e dos Fungos (INCT- Virtual Herbarium of Flora and Fungi 2018), Jabot – Banco de dados da Flora Brasileira (JBRJ, 2017), and Re flora - Virtual Herbarium (Re flora, 2017). In a total we reviewed 1353 records of ferns and lycophytes from all forest remnants of Juiz de Fora.

The municipality of Juiz de Fora is located in the southeast of the state of Minas Gerais, between the approximate geographical coordinates of 21° 31' 16" and 21° 59' 59" S and 43° 08' 50" and 43° 41' 10" W. The regional climate can be characterized as Köppen type Cwa (mesothermal, with hot and rainy summers). The average annual precipitation, measured between the years 1999 and 2011, is 1627.8mm and the average annual temperature is around 19.3 ° C, for the same period. The altitude varies from 467 to 1104m and the relief is diverse, with concave-convex hills and valleys (Anuário Estatístico de Juiz de Fora, 2012). The municipality has remaining areas of Atlantic Forest, permeated by the city. Around 24% (9,662 ha) of the urban area of the municipality of Juiz de Fora is covered by forests, distributed in 1,122 fragments. Consequently, the average size of these fragments is 8.61 ha (Barros 2015). Most of these fragments have different sizes, are at different stages of regeneration and still suffer constant impact from anthropic action.

We used ArcGIS ver. 10 (ESRI 2011) to build a map showing the forest areas of Juiz de Fora (Figure 2). We adopted PPG I (2016) as the classification system, and follow the definitions of Lellinger (2002) and Zuquim *et al.* (2008) to categorize the species' preferential substrate in: terrestrial, rupicolous, corticolous, hemicorticolous, amphibians, and aquatic.

## RESULTS

### Sampling history

The first samplings of ferns and lycophytes in the municipality of Juiz de Fora date from the second half of the 19th century. *Elaphoglossum nigrescens* was the first species to be sampled. Collected in February 1862, it was deposited at Herbário Capanema in Manaus (Amazonas State). Currently the specimen is stored in the herbarium of the Botanical Garden of Rio de Janeiro (RB) (RB00687659), and the voucher has an original label dated 1862, in addition to another label transcribed with the spelling of Alex Curt Brade (1881-1971), with the date changed to 1863.

At the beginning of the 20th century, other samplings were made by the Carl August Wilhelm Schwacke (1848-1904). The specimens came from one of Schwacke's expeditions to the state of Minas Gerais, passing through Juiz de Fora between June and July of 1902. The locations sampled by Schwacke in Juiz de Fora were Poço d'Anta and Morro do Imperador, where 14 species were sampled, most of which are stored at the RB herbarium. Subsequently, the ferns and lycophytes of Juiz de Fora was explored by Brade in two sampling expeditions, in 1934 and 1937 respectively, in which another 14 species were recorded for the municipality.

From the first sampling to the first half of the 20th century, although the municipality of Juiz de Fora had great importance in the national context for coffee production and its industries, the knowledge of local flora remained incipient. The second half of the 20th century was marked by a significant increase in samplings, driven by the founding of the Leopoldo Krieger Herbarium (CESJ) in 1940, as an initiative of the priests Leopoldo Krieger (1919-2008) and Luiz Roth, by the time students of Theology (Salimena & Menini-Neto, 2008).

The first samplings by Krieger and Roth in Juiz de Fora date from the years 1942, 1948, and 1949. These are single samplings of which only 28 specimens were incorporated into the newly founded herbarium. In 1969 Krieger was hired as a professor at the Universidade Federal de Juiz de Fora (Salimena & Menini-Neto, 2008). From this date, a significant volume of samplings was recorded for the municipality, done by the priest and his students until the end of the 1980s. Of the 1,353 sampling records for the municipality, approximately 672 (49%) were collected by Krieger, who was the first sampler in more than 90% of the cases, between 1969-1989. From 1990 to the present, with the Biology course at Universidade Federal de Juiz de Fora already strongly consolidated, samplings started to be done by a more varied number of samplers and the number of records practically doubled.

### Floristic composition

We found 175 species, distributed in 73 genera and 26 families. The richest families were Pteridaceae with 32 species and eight genera (18% of species), Polypodiaceae with 26 species and eight genera (14%) and Thelypteridaceae with 20 species and seven genera (11%) (Figure 1, Table 1). The most representative genera were *Adiantum*, with nine species, *Amauropelta*, *Asplenium*, *Microgramma*, and *Pteris*, with seven each, *Cyathea* and *Selaginella*, with six each, *Anemia*, *Ctenitis*, *Doryopteris*, *Pleopeltis*, and *Serpocaulon*, with five species each. Regarding the habit, about 16% of the species are epiphytes and about 84% are terrestrial or rupicolous. In addition, naturalized species such as *Deparia petersenii*, *Macrothelypteris torresiana*, *Christella dentata*, and *Pteris vittata* were collected.

### DISCUSSION

Salino & Almeida (2009a) pointed out, among the main threats to species of ferns and lycophytes in the State of Minas Gerais, the decrease and degradation of habitats, due to the subsequent decline in the optimum conditions for establishment and survival. Nevertheless, Lima & Dittrich (2016) recorded 78 species in only three remaining areas of Atlantic Forest in Juiz de Fora, which represent nearly 43% of the total registered here. This shows that few areas, even if immersed in an urban matrix with more than 500 thousand inhabitants, may house a high number of species of native flora.

The results of the present study point to a higher number of species compared to inventories carried out in other areas of the Southeast and South of Brazil in which the main phytophysionomy is composed of Seasonal Semideciduous Forest (SSF) (Table 2). Colli *et al.* (2004b) recorded 34 species for Seasonal Semideciduous Forest from Parque Estadual de Vassununga, São Paulo State, in an area of 1,732 ha with an altitude between 500-750m. Melo & Salino (2002a) recorded 116 species for Parque Estadual do Rio Doce (PERD), which has a larger area with 35,970 ha. Despite the large area of forest of PERD, less fragmented than the forest formations of Juiz de Fora, the low number of species found may be related to the low altitude and limited altitudinal variation of PERD (215 to 525m). Salino & Almeida (2009a) showed that altitudinal ranges above 700 m are the richest in the state of Minas Gerais. Similarly, Senna & Kazmirczak (1997) recorded 45 species in an area of 1,031 ha of Seasonal Semideciduous Forest in Morro da Extrema, Rio Grande do

Sul State. In this case, the low number of species may be associated with the maximum altitude of the area at 225m (Table 2). Furthermore, the southern region of Brazil has fewer species of ferns and lycophytes than the southeastern region (Flora do Brasil 2020 Online 2020).

Melo & Salino (2002b) recorded 102 species in an area of 880 ha of SSF at Estação Biológica de Caratinga, Minas Gerais. This area has medium altitudes, and the forest remnants are more continuous than those of Juiz de Fora (JF). It is to be expected that in inventories on a regional scale, as performed in JF, the number of species will be greater than inventories on a local scale (Mehltreter 2010). However, the lower number of species found when we observe the species/area ratio may be associated with the broad history of exploitation, degradation, and fragmentation of forest formations in Juiz de Fora.

Similarly, Figueiredo & Salino (2005) recorded 190 species in fragmented areas in the metropolitan region of Belo Horizonte, Minas Gerais. Such areas comprise a mosaic of phytophysionomies in a transition zone between Cerrado and Atlantic Forest, of which the predominant phytophysionomy is Seasonal Semideciduous Forest. This work demonstrates that, as in Juiz de Fora, such fragmented areas, although under constant threat, can be important refuges and harbor a considerable number of native species.

According to Salino & Almeida (2009a), in their diagnosis of the ferns and lycophytes flora of the Minas Gerais State, the SSF was the forest formation with the highest number of species (429 spp. - 62.5%), exceeding the number of species recorded for the Tropical Rain Forest (384 spp. - 56%). The authors also correlate these factors to the relief of the state, since in Minas Gerais the domain of the Semideciduous Forest is mainly restricted to mountainous regions, where there are many deep valleys that allow the occurrence of most ferns and lycophytes.

Here 16 species for SSF listed by Salino & Almeida (2009b) as exclusive of the Atlantic Tropical Rain Forest (Table 1). These new records may be associated with some factors related to sampling deficiency and the fluctuation of micro-habitats due to variations in the relief forms of the studied area. Examples of these species are representatives of Hymenophyllaceae, registered mainly in the Rio do Peixe region, and *Danaea excurrens* (Marattiaceae), found in a valley bottom. On the other hand, it is interesting to note that Pteridaceae is the richest family (33 spp., Table 1), surpassing Polypodiaceae, Dryopteridaceae and Thelypteridaceae, a pattern that traditionally occurs in SSF formations (Melo & Salino, 2002; Salino & Almeida, 2009).

Regarding the rates of epiphytes, the present study found 16%, which seems to be close to the rates found in other SSF inventories such as Colli *et al.* (2007), for Reserva Estadual de Águas da Prata (15%), Colli *et al.* (2004b), for Parque Estadual de Vassununga (20%), and higher than the values found by Melo & Salino (2002a) for Estação Biológica de Caratinga (8.5%), Melo & Salino (2002b) for Parque Estadual do Rio Doce (8.2%), and Senna & Kazmirczak (1997) for Morro da Extrema (8%). These indexes are in accordance with the pattern found for this type of forest formation (SSF), with the regeneration stages of forest fragments, and may be associated with seasonality influencing the air humidity indexes, which is essential for the establishment of epiphytic plants (Figueiredo & Salino, 2005).

Among the native species recorded, *Elaphoglossum acrocarpum* (Dryopteridaceae) stands out as threatened with extinction in the vulnerable category according to Kieling-Rubio *et al.* (2013). However, a few species of ferns and lycophytes can favor themselves in anthropized environments and increase the abundance of their populations, such as *Lycopodium clavatum* and species of Gleicheniaceae, such as *Dicranopteris flexuosa* and *Gleichenella pectinata*. Such plants occupy anthropized and altered areas like ravines by the roadsides. In addition, naturalized species can also benefit from environmental change

and be widely spread, such as *Macrothelypteris torresiana*, *Christella dentata*, *Pteris vittata*, and *Deparia petersenii*, all found in Juiz de Fora. Finally, species of Gleicheniaceae and *Pteridium* (Dennstaedtiaceae), like the ones recorded to JF, can directly influence the process of succession and regeneration of secondary forests, both delaying the process and competing directly with native species (Mehltreter, 2010).

Habitat destruction has a direct impact on the diversity of most species of lycophytes and ferns and may even lead to the extinction of local populations (Salino & Almeida, 2009a; Mehltreter, 2010). Through the observation of the extensive sampling history of more than 150 years, it is possible to assess that the frequency of sampling of some taxa changes. The three species of the genus *Elaphoglossum* (*E. acrocarpon*, *E. nigrescens*, and *E. macrophyllum*) recorded here were sampled only once, which may signal the imminent risk to the conservation of the local vascular flora.

Recently, a new species of Dryopteridaceae, *Ctenitis christensenii* R.S.Viveros & Salino, was described for the Brazilian Atlantic Forest and is here recorded for the first time for Juiz de Fora. The species was sampled only once in the municipality by Brade in 1937. Other than that, there is no other record of this species in the region, which means there is a great chance that this species may be locally extinct, as well as some other species. On the other hand, some species have a low frequency of collection due to specific characteristics of their biology such as *Ophioglossum reticulatum* - which is an annual plant - and *Pleopeltis minima*, which in addition to the small size presents poikilohydry, which makes it difficult to be spotted during the dry season.

Regenerating forest ecosystems hold only part of the original biodiversity (Paciência, 2001), which is valid for forest fragments in the municipality of Juiz de Fora, which, despite the history of devastation and the different stages of regeneration, presents a high richness of ferns and lycophytes. The loss of biodiversity of the ferns and lycophytes in the studied areas may be associated with the deterioration of the optimum conditions of the environments, such as the changes in humidity and shading when compared to those offered in primary forests.

The regeneration of the studied forest fragments in the municipality of Juiz de Fora attests to the high resilience of the Atlantic Forest (Pinto & Brito, 2003; Rezende *et al.*, 2018), as exemplified by the regeneration of the Krambeck forest, which after being destroyed to form pastures, after 70 years of regeneration has shown significant recovery (Lima & Dittrich, 2016). With the conservation of these forest areas over the years (progress in the succession process), the colonization of new species of ferns and lycophytes may occur and the abundance of more demanding species in terms of shade and humidity may increase (Figueiredo & Salino, 2005). Therefore, the present results reaffirm the importance of maintaining and conserving urban forest fragments for sustaining Brazilian biodiversity in one of the biomes most affected by anthropic action.

## ACKNOWLEDGEMENTS

We thank Thaís Elias Almeida for notes and comments about this manuscript. This study was financed in part by the Coordenação de Aperfeiçoamento de Pessoal de Nível Superior - Brasil (CAPES) - Finance Code 001 (88887.19244/2018-00). We also thank CNPq for the research grant and scholarship (307115/2017-8) to A. Salino.

## REFERENCES

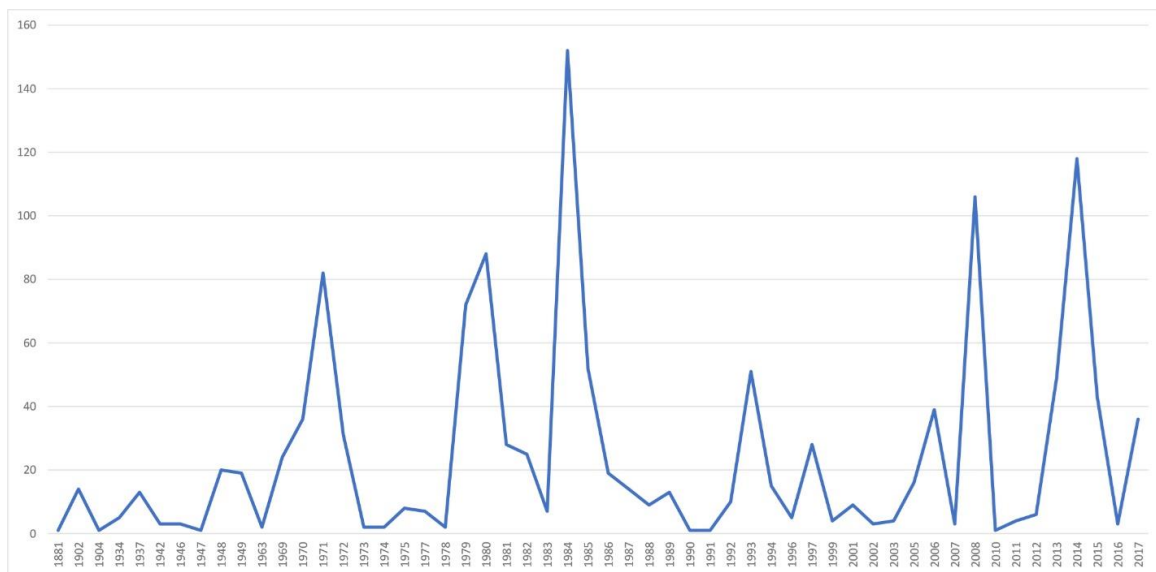
ALMEIDA, D. 1996. *Florística e estrutura de um fragmento de Floresta Atlântica, no município de Juiz de Fora, Minas Gerais*. Dissertação de Mestrado. Universidade Federal de Viçosa, Viçosa.

- ALMEIDA, T.E. & SALINO, A. 2016. State of the art and perspectives on neotropical fern and lycophyte systematics. *Journal of Systematic and Evolution* 54: 679-690.
- ANUÁRIO ESTATÍSTICO DE JUIZ DE FORA. 2012. Juiz de Fora. Available at < <http://www.cps.ufjf.br/anuarios/Anuario2012/index.html>>. Access on 07 March 2020.
- BARROS, K.D.A.R.T. 2015. *Levantamento dos fragmentos florestais da cidade de Juiz de Fora, Minas Gerais, Brasil*. Dissertação de Mestrado. Universidade Federal de Juiz de Fora, Juiz de Fora.
- CINCOTTA, R.P.; WISNEWSKI, J. & ENGELMAN, R. 2000. Human population in the biodiversity hotspots. *Nature* 404: 990-992.
- COLLI, A.M.T.; SALINO, A.; FERNANDES, A.C.; RANGEL, C.M.; BARBOSA, R.A.; CORREIA, R.A. & SILVA, W.F. 2004a Pteridófitas da Floresta Estadual de Bebedouro, Bebedouro, São Paulo, Brasil. *Revista do Instituto Florestal* 16: 147-152.
- COLLI, A.M.T.; SALINO, A.; SOUZA, A.S.; LUCCA, A.L.T. & SILVA, R.T. 2004b. Pteridófitas do Parque Estadual da Vassununga, Santa Rita do Passa Quatro (SP), Brasil. Glebas Capetinga Leste e Capetinga Oeste. *Revista do Instituto Florestal* 16: 25-30.
- ESRI. 2011. ArcGIS Desktop: Release 10. Redlands, CA: Environmental Systems Research Institute.
- FERREIRA JÚNIOR, W.G.; SILVA, A.F.; MEIRA NETO, J.A.A.; SCHAEFER, C.E.G.R.; DIAS, A.S., IGNÁCIO, M. & MEDEIROS, M.C.M.P. 2007. Composição florística da vegetação arbórea de um trecho de floresta estacional semidecídua em Viçosa, Minas Gerais, e espécies de maior ocorrência na região. *Revista Árvore* 31: 1121-1130.
- FIGUEIREDO, J.B. & SALINO, A. 2005. Pteridófitas de quatro reservas particulares do patrimônio natural ao sul da região metropolitana de Belo Horizonte, Minas Gerais, Brasil. *Lundiana* 6: 83-94.
- FILGUEIRAS, T.S.; BROCHADO, A.L.; NOGUEIRA, P.E. & GUALLA, G.F. 1994. Caminhamento - um método expedito para levantamentos florísticos qualitativos. *Cadernos de Geociências* 12: 39-43.
- FLORA DO BRASIL 2020 EM CONSTRUÇÃO 2020. Jardim Botânico do Rio de Janeiro. Available at < <http://floradobrasil.jbrj.gov.br/> > Access on 30 June 2020.
- FONSECA, C.R. & CARVALHO, F.A. 2012. Aspectos florísticos e fitossociológicos da comunidade arbórea de um fragmento urbano de Floresta Atlântica (Juiz de Fora, MG, Brasil). *Bioscience Journal* 28: 820-832.
- GALINDO-LEAL, C.; JACOBSEN, T.R.; LANGHAMMER, P.F. & OLIVIERA, S. 2005 Estado dos hotspots: a dinâmica da perda de biodiversidade. In *Mata Atlântica: biodiversidade, ameaças e perspectivas* (GALINDO-LEAL, C. & CÂMARA, I.G., eds). Ed. Fundação SOS Mata Atlântica/Conservação Internacional, Belo Horizonte. Pp. 12-23.
- KIELING-RUBIO, M.A.; MATOS, F.B.; CONDACK, J.P.S.; MAURENZA, D.; PENEDO, T.S.A. & MESSINA, T. 2013. Dryopteridaceae. In *Livro vermelho da flora do Brasil* (MARTINELLI, G. & MORAES, M.A., eds), Ed. Jardim Botânico do Rio de Janeiro, Rio de Janeiro. Pp.847-849.
- LELLINGER, D.B. 2002. Modern multilingual glossary for taxonomic pteridology. *Pteridologia* 3:1-263.
- LIEBSCH, D.; MARQUES, M.C. & GOLDENBERG, R. 2008. How long does the Atlantic Rain Forest take to recover after a disturbance? Changes in species composition and ecological features during secondary succession. *Biology Conservation* 141: 1717-1725.
- LIMA, L.V. & DITTRICH, V.A.O. 2016. Licófitas e monilófitas de três áreas de remanescentes de Floresta Estacional Semidecidual no município de Juiz De Fora, Minas Gerais, Brasil. *Pesquisas, Botânica* 69:183-198.

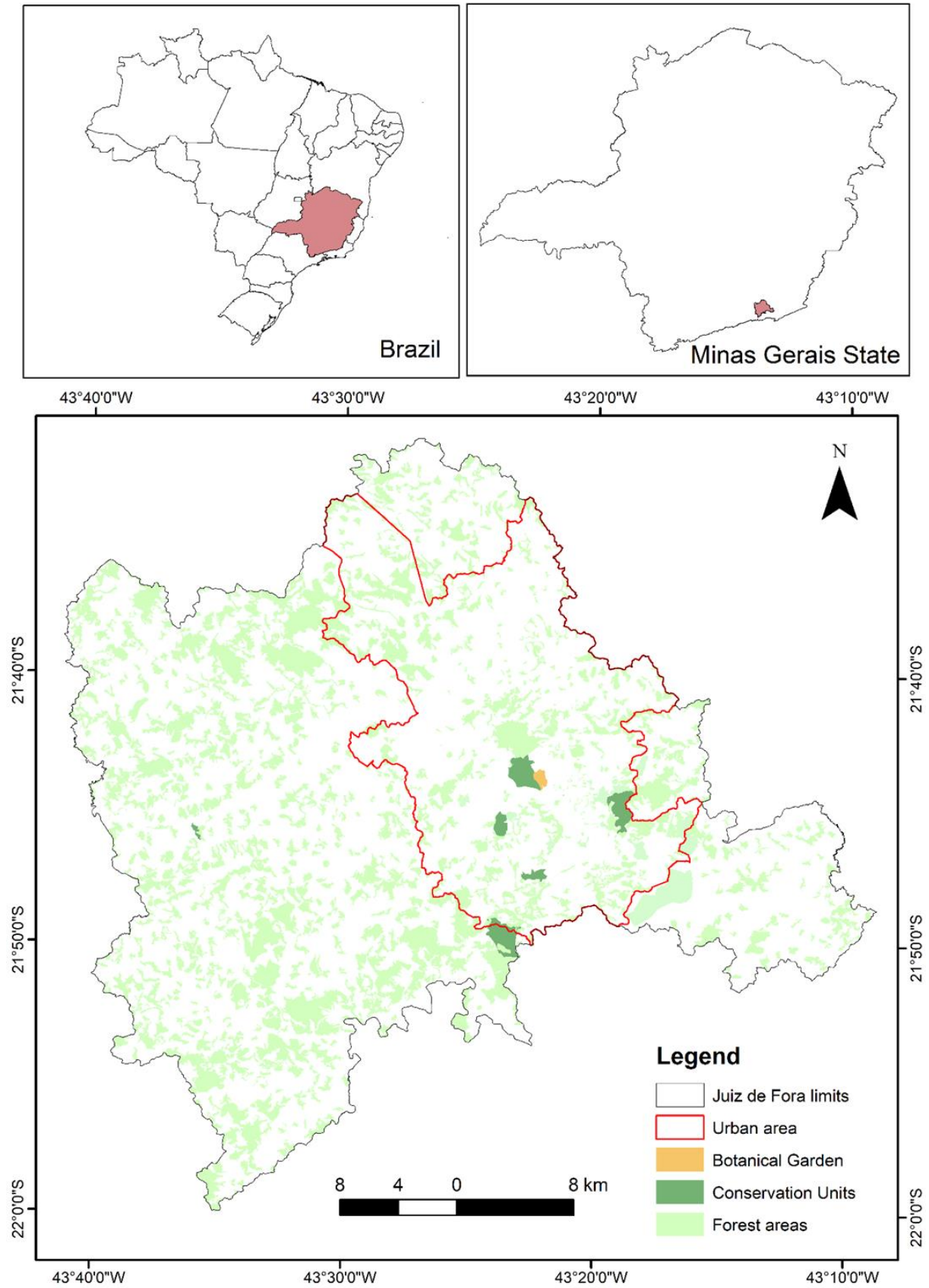
- MEHLTRETER, K. 2010. Fern conservation. In *Fern Ecology* (MEHLTRETER, K.; WALKER, L.R. & SHARPE, J.M., eds). Ed. Cambridge University Press, Cambridge. Pp. 323-359.
- MELO, L.C.N. & SALINO, A. 2002. Pteridófitas de duas áreas de floresta da Bacia do Rio Doce no Estado de Minas Gerais, Brasil. *Lundiana* 3:129-139.
- MELO, L.C.N. & SALINO, A. 2007. Pteridophytes from APA Fernão Dias, Minas Gerais, Brazil. *Rodriguésia* 58: 207-220.
- MEYER, N., MITTERMEIER, R.A., MITTERMEIER, C.G., FONSECA, G. & KENT, J. 2000. Biodiversity hotspots for conservation priorities. *Nature* 403: 853-858.
- MITTERMEIER, R.A.; GIL, P.R.; HOFFMANN, M.; PILGRIM, J.; BROOKS, T.; MITTERMEIER, C.G.; LAMOUREX, J. & FONSECA, G.A.B. 2004. *Hotspots revisited*. Ed. CEMEX, Mexico City. Pp. 392.
- MORAN, R.C. 2008. Diversity, biogeography, and floristics. In *Biology and evolution of ferns and lycophytes* (RANKER, T.A. & HAUFLER, C.H., eds.). Ed. Cambridge University Press, Cambridge. Pp.367-394.
- MYERS, N.; MITTERMEIER, R.A.; MITTERMEIER, C.G.; DA FONSECA, G.A. & KENT, J. 2000. Biodiversity hotspots for conservation priorities. *Nature* 403: 853-858.
- NÓBREGA, G.A. & PRADO, J. 2008. Pteridófitas da vegetação nativa do Jardim Botânico Municipal de Bauru, Estado de São Paulo, Brasil. *Hoehnea* 35: 7-55.
- PAGE, C.N. 1979. The diversity of ferns: an ecological perspective. In: DYER, A.F. (Ed.). *The experimental biology of ferns*. London: Academic Press, p. 10-56.
- PPG I. 2016. A community-derived classification for extant lycophytes and ferns. *J. Syst. Evol.* 54: 563-603.
- PREFEITURA DE JUIZ DE FORA 2017. Available at <<http://www.pjf.mg.gov.br>>. Access on 20 October 2017.
- REZENDE, C.L.; SCARANO, F.R.; ASSAD, E.D.; JOLY, C.A.; METZGER, J.P.; STRASSBURG, B.B.N. & MITTERMEIER, R.A. 2018. From hotspot to hopespot: An opportunity for the Brazilian Atlantic Forest. *Persp. Ecol. Conser.* 16: 208-214.
- RIBEIRO, M.C.; MARTENSEN, A.C; METZGER, J.P.; TABARELLI, M.; SCARANO, F.R. & FORTIN, M.J. 2011. The Brazilian Atlantic Forest: a shrinking biodiversity hotspot. In *Biodiversity Hotspots* (ZACHOS, F.E., HABEL, J.C., eds). Ed. Springer, Berlin. Pp. 405–434.
- RIBEIRO, M.C.; METZGER, J.P.; MARTENSEN, A.C.; PONZONI, F.J. & HIROTA, M.M. 2009. The Brazilian Atlantic Forest: How much is left, and how is the remaining forest distributed? Implications for conservation. *Biology Conservation* 142: 1141-1153.
- SALINO, A. & ALMEIDA, T.E. 2009. Pteridófitas. In *Plantas da Floresta Atlântica* (STEHMANN, J.R.; FORZZA, R.C.; SALINO, A.; SOBRAL, M., COSTA, D.P. & KAMINO, L.H.Y., eds.). Ed. Jardim Botânico do Rio de Janeiro, Rio de Janeiro. Pp.19-25.
- SALINO, A.; MOTA, N.F.O. & ALMEIDA, T.E. 2013. Lycophytes and monilophytes in Rio Preto State Park, Minas Gerais, Brazil. *Acta Botanica Brasilica* 27: 252-263.
- SCOLFORO, J.R.S. & CARVALHO, L.M.T. 2006. *Mapeamento e inventário da flora nativa e dos reflorestamentos de Minas Gerais*. Ed. Universidade Federal de Lavras, Lavras. Pp 288.
- SENNA, R.M. & KAZMIRCZAK, C. 1997. Pteridófitas de um remanescente florestal no morro da extrema, Porto Alegre, RS. *Revista FZVA* 4:33-48.
- SILVA, A.T. 1989. Pteridófitas. In *Técnicas de coleta, preservação e herborização de material botânico* (FIDALGO, O. & BONONI, V.L.R., eds). Ed. Instituto de Botânica, São Paulo. Pp. 32-34.
- SOUZA, F.S.; SALINO, A.; VIANA, P.L. & SALIMENA, F.R.G. 2012. Ferns and lycophytes of Serra Negra, Minas Gerais, Brazil. *Acta Botanica Brasilica* 26: 378-390.



- STEFFENS, C. & WINDISCH, P.G. 2007. Diversidade e formas de vida de pteridófitas no Morro da Harmonia em Teutônia-RS, Brasil. *Pesquisas, Botânica* 58: 375-382.
- STEHMANN, J.R.; FORZZA, R.C.; SALINO, A.; SOBRAL, M.; COSTA, D.P. & KAMINO, L.H.Y. 2009. *Plantas da floresta Atlântica*. Ed. Jardim Botânico do Rio de Janeiro, Rio de Janeiro.
- THIERS, B. 2020. *Index Herbariorum: A global directory of public herbaria and associated staff*. New York Botanical Garden's Virtual Herbarium. Available at <<http://sweetgum.nybg.org/ih/>> Access on 03 March 2018.
- TRYON, R.M. 1972. Endemic areas and speciation in tropical American ferns. *Biotropica* 4: 76-84.
- TRYON, R.M. 1986. The biogeography of species, with special reference to ferns. *Botanical Review* 52: 118-156.
- WHITMORE, T.C. 1978. Gaps in the forest canopy. In *Tropical trees as living systems* (TOM-LINSON, P.B. & ZIMMERMAN, M.H., eds.). Cambridge University Press, London. Pp. 639-655.
- ZUQUIM, G.; COSTA, F.R.C.; PRADO, J. & TUOMISTO, H. 2008. *Guia de samambaias e licófitas da REBIO Uatumã. Amazônia Central*. Ed. Design, Manaus. Pp. 316.



**Figure 1.** Number of samples of ferns and lycophytes in Juiz de Fora through the years.



**Figure 2.** Map showing the forest areas of Juiz de Fora.

**Table 1.** Ferns and lycophytes species in the municipality of Juiz de Fora. AE: anthropogenic environment, CO: Corticolous, HC: Hemicorticolous, MD: missing data, NC: not computed, RU: rupicolous, SSF: Seasonal Semideciduous Forest, TE: terricolous.

Taxon	Preferential substrate	Environment	Voucher
<b>Anemiaceae</b>			
<i>Anemia collina</i> Raddi	TE	NC	Krieger s.n (CESJ 11812)
<i>Anemia hirsuta</i> (L.) Sw.	RU/TE	AE	Lima 17
<i>Anemia phyllitidis</i> (L.) Sw.	TE	SSF	Lima 02
<i>Anemia raddiana</i> Link	TE	SSF	Krieger s.n. (CESJ 20151)
<i>Anemia villosa</i> Willd.	TE	SSF	Lima 29
<b>Aspleniaceae</b>			
<i>Asplenium auriculatum</i> Sw.	TE	SSF	Krieger 10545
<i>Asplenium auritum</i> Sw.	TE	SSF	Lima 143
<i>Asplenium claussenii</i> Hieron.	TE	SSF	Dittrich 2185
<i>Asplenium formosum</i> Willd.	TE	SSF	Krieger 9223
<i>Asplenium harpeodes</i> Kunze	TE	SSF	Garcia 94
<i>Asplenium inaequilaterale</i> Willd.	TE	SSF	Souza 232
<i>Asplenium serratum</i> L.	TE	SSF	Krieger 17382
<b>Athyriaceae</b>			
<i>Deparia petersenii</i> (Kunze) M. Kato	TE	SSF	Lima 80
<i>Diplazium cristatum</i> (Desr.) Alston	TE	SSF	Damazio s.n. (CESJ 3348)
<i>Diplazium lindbergii</i> (Mett.) Christ	TE	SSF	Krieger s.n. (CESJ 20748)
<i>Diplazium plantaginifolium</i> (L.) Urb.	TE	SSF	CESJ 2627
<b>Blechnaceae</b>			
<i>Blechnum austrobrasilianum</i> de la Sota	TE	SSF	Lima 13
<i>Blechnum gracile</i> Kaulf.	TE	SSF	Krieger (CESJ 11716)
<i>Blechnum occidentale</i> L.	RU/TE	SSF/AE	Novelino s.n. (CESJ 29977-B)
<i>Blechnum polypodioides</i> Raddi	TE	SSF	Lima 05
<i>Lomaridium plumieri</i> (Desv.) C.Presl	RU/HE	SSF	Lima 57
<i>Neoblechnum brasiliense</i> (Desv.) Gasper & V.A.O.Dittrich	TE	SSF	Lima 68
<i>Parablechnum cordatum</i> (Desv.) Gasper & Salino	TE	SSF/AE	Novelino 1288
<i>Parablechnum proliferum</i> (Rosenst.) Gasper & Salino	TE		Krieger (CESJ2759)
<i>Salpichlaena volubilis</i> (Kaulf.) J.Sm.	TE	SSF	Lima 58
<i>Telmatoblechnum serrulatum</i> (Rich.) Perrie, D.J.Ohlsen & Brownsey	TE	SSF	
<b>Cyatheaceae</b>			
<i>Cyathea atrovirens</i> (Langsd. & Fisch.) Domin	TE	SSF	Krieger (CESJ 20926)
<i>Cyathea corcovadensis</i> (Raddi) Domin	TE	SSF	Lima 53
<i>Cyathea delgadii</i> Sternb.	TE	SSF	Lima 01
<i>Cyathea leucofolis</i> Domin	TE	SSF	Souza 411
<i>Cyathea mexiae</i> Copel.	TE	SSF	Lima 54
<i>Cyathea phalerata</i> Mart.	TE	SSF	Lima 60
<i>Sphaeropteris gardneri</i> (Hook.) R.M.Tryon	TE	SSF	Krieger 10719
<b>Dennstaedtiaceae</b>			
<i>Dennstaedtia globulifera</i> (Poir.) Hieron.	TE	SSF	Souza 387
<i>Hypolepis mitis</i> Kunze ex Kuhn	TE	SSF	Lima 41
<i>Pteridium arachnoideum</i> (Kaulf.) Maxon	TE	AE	Novelino s.n. (CESJ 29969)
<b>Didymochlaenaceae</b>			
<i>Didymochlaena truncatula</i> (Sw.) J.Sm.	TE	SSF	Krieger (CESJ 7035)
<b>Dryopteridaceae</b>			
<i>Ctenitis aspidioides</i> (C.Presl) Copel.	TE	SSF	Garcia 85
<i>Ctenitis christensenii</i> R.S.Viveros & Salino	TE	SSF	Brade 15812

<i>Ctenitis deflexa</i> (Kaulf.) Copel.	TE	SSF	Brade 15909
<i>Ctenitis distans</i> (Brack.) Ching var. <i>distans</i>	TE	SSF	Lima 42
<i>Ctenitis submarginalis</i> (Langsd. & Fisch.) Ching var. <i>submarginalis</i>	TE	SSF	Krieger s.n. (CESJ 17108)
<i>Ctenitis submarginalis</i> var. <i>tenuifolia</i> (C.Presl) R.S.Viveros & Salino	TE	SSF	Lima 104
<i>Elaphoglossum acrocarpum</i> (Mart.) T.Moore	CO	SSF	Krieger s.n. (CESJ 10541)
<i>Elaphoglossum macrophyllum</i> (Mett. ex Kuhn) Christ	CO	SSF	Krieger s.n. (CESJ 10541)
<i>Elaphoglossum nigrescens</i> (Hook.) T.Moore ex Diels	CO	SSF	RB 6823
<i>Megalastrum umbrinum</i> (C.Chr.) A.R.Sm. & R.C.Moran	TE	SSF	Schwacke s.n. (CESJ 3428)
<i>Mickelia scandens</i> (Raddi) R.C. Moran, Labiak & Sundue	TE	SSF	Dittrich 2186
<i>Parapolystichum effusum</i> (Sw.) Ching	TE	SSF	Krieger s.n. (CESJ 11789)
<i>Polybotrya pilosa</i> Brade	HC	SSF	Lima 46
<i>Polybotrya speciosa</i> Schott	HC	SSF	Novelino 412
<i>Rumohra adiantiformis</i> (G. Forst.) Ching	TE	SSF	Krieger s.n. (CESJ 63519)
<i>Stigmatopteris bradei</i> Rosenst.	TE	SSF	Brade 15914
<i>Stigmatopteris brevinervis</i> (Fée) R.C.Moran	TE	SSF	Krieger s.n. (BHCB 93100)
<i>Stigmatopteris prionites</i> (Kunze) C.Chr.	TE	SSF	Krieger s.n. (CESJ 17107)
<b>Equisetaceae</b>			
<i>Equisetum giganteum</i> L.	TE	MD	Krieger s.n. (CESJ 1296)
<b>Gleicheniaceae</b>			
<i>Dicranopteris flexuosa</i> (Schrad.) Underw.	TE	SSF	Lima 34
<i>Gleichenella pectinata</i> (Willd.) Ching	TE	SSF	Lima 45
<i>Sticherus bifidus</i> (Willd.) Ching	TE	SSF	Lima 94
<i>Sticherus gracilis</i> (Mart.) Copel.	TE	SSF	Lima 216
<i>Sticherus lanuginosus</i> (Fée) Nakai	TE	SSF	Lima 06
<i>Sticherus nigropaleaceus</i> (J.W.Sturm) J.Prado & Lellinger	TE	SSF	Lima 20
<b>Hymenophyllaceae</b>			
<i>Didymoglossum krausii</i> (Hook & Grev.) C. Presl	TE	SSF	Krieger s.n. (CESJ 20760)
<i>Didymoglossum reptans</i> (Sw.) C. Presl	CO	SSF	Roth s.n. (BHCB 51794)
<i>Hymenophyllum polyanthos</i> (Sw.) Sw.	CO	SSF	Krieger s.n. (BHCB 4255)
<i>Polyphlebium angustatum</i> (Carmich.) Ebihara & Dubuisson	CO	SSF	Almeida 29
<i>Trichomanes elegans</i> Rich.	TE	SSF	Leoni 2910
<i>Trichomanes pinnatum</i> Hedw.	TE	SSF	Leoni 2968
<i>Trichomanes polypodioides</i> Raddi	TE	SSF	Krieger s.n. (CESJ 21291)
<i>Vandenboschia radicans</i> (Sw.) Copel.	CO	SSF	Krieger s.n. (BHCB 4334)
<b>Lindsaeaceae</b>			
<i>Lindsaea quadrangularis</i> Raddi subsp. <i>quadrangularis</i>	TE	SSF	Brade s.n. (CESJ 3438)
<i>Lindsaea stricta</i> (Sw.) Dryand.	TE	SSF	Lima 128
<b>Lomariopsidaceae</b>			
<i>Lomariopsis marginata</i> (Schrad.) Kuhn	HC	SSF	Souza 235
<b>Nephrolepidaceae</b>			
<i>Nephrolepis biserrata</i> (Sw.) Schott	TE	SSF	Krieger (CESJ 18822)
<i>Nephrolepis exaltata</i> (L.) Schott	TE	SSF	Lima 139
<i>Nephrolepis pectinata</i> (Willd.) Schott	CO	AE	Furtado 83
<b>Lycopodiaceae</b>			
<i>Palhinhaea camporum</i> B.Øllg. & P.G.Windisch	TE	SSF	Santos s.n. (CESJ 30071)
<i>Palhinhaea cernua</i> (L.) Franco & Vasc.	TE	SSF	Lima 04
<i>Phlegmariurus mandiocanus</i> (Raddi)	TE	SSF	Krieger s.n. (CESJ 2774)

B.Øllg.				
<i>Phlegmariurus reflexus</i> (Lam.) B.Øllg.	TE	AE		Lima 08
<i>Lycopodiella geometra</i> B.Øllg. & P.G.Windisch	TE	SSF		Santos s.n. (CESJ 30069)
<i>Lycopodium clavatum</i> L.	TE	AE		Lima 92
<i>Pseudolycopodiella caroliniana</i> (L.) Holub	TE/RU	AE		Lima 37
<b>Lygodiaceae</b>				
<i>Lygodium volubile</i> Sw.	TE	SSF		Lima 129
<b>Marattiaceae</b>				
<i>Danaea excurrens</i> Rosenst.	TE	SSF		Garcia 92
<b>Ophioglossaceae</b>				
<i>Ophioglossum reticulatum</i> L.	TE	AE		Scalon 452
<b>Osmundaceae</b>				
<i>Osmunda regalis</i> L.	TE	BR		Lima 69
<b>Polypodiaceae</b>				
<i>Campyloneurum crispum</i> Fée	CO/RU /TE	SSF		Lima 49
<i>Campyloneurum decurrens</i> (Raddi) C.Presl	TE	SSF		Novelino 454
<i>Campyloneurum nitidum</i> (Kaulf.) C.Presl	TE	SSF		Krieger 199
<i>Campyloneurum rigidum</i> J.Sm.	CO/RU	SSF		Mota 42
<i>Moranopteris achilleifolia</i> (Kaulf.) R.Y.Hirai & J.Prado	CO	SSF		Krieger s.n. (BHCB 4382)
<i>Microgramma crispata</i> (Fée) R.M. Tryon & A.F. Tryon	CO	SSF		Lima 126
<i>Microgramma geminata</i> (Schrad.) Mickel	CO	SSF		Krieger s.n. (UEC 63111)
<i>Microgramma lindbergii</i> (Mett.) de la Sota	CO	SSF		Krieger s.n. (BHCB 166028)
<i>Microgramma percussa</i> (Cav.) de la Sota	CO	SSF		Krieger s.n. (CESJ 2678)
<i>Microgramma squamulosa</i> (Kaulf.) de la Sota	CO	AE		Lima 113
<i>Microgramma tecta</i> (Kaulf.) Alston	CO	AE		Lima 142
<i>Microgramma vacciniifolia</i> (Langsd. & Fisch.) Copel.	CO	SSF		Neto 1147
<i>Niphidium crassifolium</i> (L.) Lellinger	TE	SSF		Krieger s.n. (CESJ 2784)
<i>Pecluma plumula</i> (Humb. & Bonpl. ex Willd.) M.G.Price	CO	SSF		Krieger s.n. (CESJ 20440)
<i>Pecluma robusta</i> (Fée) M.Kessler & A.R.Sm.	CO /TE	SSF		Lima 44
<i>Phlebodium pseudoaureum</i> (Cav.) Lellinger	CO	AE		Lima 108
<i>Pleopeltis astrolepis</i> (Liebm.) E.Fourn.	CO	AE		Lima 83
<i>Pleopeltis hirsutissima</i> (Raddi) de la Sota	CO	AE		Lima 81
<i>Pleopeltis macrocarpa</i> (Bory ex Willd.) Kaulf.	CO	SSF		Krieger s.n. (CESJ 2789)
<i>Pleopeltis minima</i> (Bory) J.Prado & R.Y.Hirai	CO	AE		Krieger s.n. (CESJ 2692)
<i>Pleopeltis pleopeltifolia</i> (Raddi) Alston	CO	AE		Lima 102
<i>Serpocaulon catharinae</i> (Langsd. & Fisch.) A.R.Sm	CO	SSF		Lima 43
<i>Serpocaulon latipes</i> (Langsd. & Fisch.) A.R.Sm.	CO	AE		Krieger s.n. (CESJ 11933)
<i>Serpocaulon meniscifolium</i> (Langsd. & Fisch.) A.R.Sm.	CO	SSF		CESJ 1164
<i>Serpocaulon polystichum</i> (Link) A.R.Sm.	CO	SSF		Lima 50
<i>Serpocaulon triseriale</i> (Sw.) A.R.Sm.	CO	AE		Lima 114
<b>Pteridaceae</b>				
<i>Adiantopsis chlorophylla</i> (Sw.) Fée	TE	AE		Lima 76
<i>Adiantopsis radiata</i> (L.) Fée	TE	SSF		Lima 87
<i>Adiantum dolosum</i> Kunze	TE	SSF		Souza 341
<i>Adiantum glaucescens</i> Klotzsch	TE	AE		Lima 127
<i>Adiantum latifolium</i> Lam.	TE	SSF		Krieger 20435, Krieger

<i>Adiantum obliquum</i> Willd.	TE	SSF	s.n. (CESJ 2729) Viana s.n. (BHCB 109111), Souza et al. 468 (CESJ)
<i>Adiantum ornithopodum</i> C.Presl ex Kuhn	TE	SSF	Brade 15915
<i>Adiantum pentadactylon</i> Langsd. & Fisch.	TE	SSF	Lima 16
<i>Adiantum pulverulentum</i> L.	TE	SSF	Krieger 1172
<i>Adiantum raddianum</i> C. Presl	TE	AE	Lima 15
<i>Adiantum subcordatum</i> Sw.	TE	SSF	Lima 127
<i>Doryopteris concolor</i> (Langsd. & Fisch.) Kuhn	TE	SSF	Lima 86
<i>Doryopteris collina</i> (Raddi) J.Sm.	TE	SSF	Krieger s.n. (CESJ 18811)
<i>Doryopteris nobilis</i> (T.Moore) C.Chr.	RU/TE	SSF	Lima 22
<i>Doryopteris patula</i> Fée	RU	SSF	Souza et al. 460 (CESJ)
<i>Doryopteris pedata</i> (L.) Fée	TE	SSF	Câmara s.n. (CESJ 9225)
<i>Doryopteris pentagona</i> Pic.Serm.	TE	SSF	Lima 85
<i>Doryopteris varians</i> (Raddi) J.Sm.	TE	SSF	Krieger s.n. (BHCB 4269)
<i>Hemionitis tomentosa</i> (Lam.) Raddi	TE	SSF	Lima 75
<i>Lytoneuron crenulans</i> (Fée) Yesilyurt	TE	SSF	Krieger s.n. (CESJ 8397)
<i>Lytoneuron lomariaceum</i> (Klotzsch) Ye- silyurt	TE	AE	Novelino s.n. (CESJ 21088)
<i>Lytoneuron ornithopus</i> (Hook. & Baker) Ye- silyurt	TE	SSF	Roth s.n. (CESJ 192)
<i>Pityrogramma calomelanos</i> (L.) Link	TE	AE	Lima 11
<i>Pteris brasiliensis</i> Raddi	TE	SSF	Lima 89
<i>Pteris decurrens</i> C.Presl	TE	SSF	Castro 160
<i>Pteris denticulata</i> Sw.	TE	AE	Lima 74
<i>Pteris leptophylla</i> Sw.	TE	SSF	Krieger s.n. (CESJ 17106)
<i>Pteris quadriaurita</i> Retz.	TE	SSF	Krieger s.n. (CESJ 25556)
<i>Pteris splendens</i> Kaulf.	TE	SSF	Lima 88, Souza et al. 239 (CESJ)
<i>Pteris vittata</i> L.	TE	AE	Lima 26
<i>Tryonia myriophylla</i> (Sw.) Schuettp., J. Prado & A.T.Cochran	TE	SSF	Krieger s.n. (BHCB 4505)
<b>Saccolomataceae</b>			
<i>Saccoloma elegans</i> Kaulf.	TE	SSF	Souza 234
<b>Salviniaceae</b>			
<i>Salvinia biloba</i> Raddi	AQ	AE	Krieger s.n. CESJ2655
<b>Selaginellaceae</b>			
<i>Selaginella convoluta</i> (Arn.) Spring	MD	SSF	CESJ 3061
<i>Selaginella decomposita</i> Spring	TE	SSF	Krieger 9064
<i>Selaginella muscosa</i> Spring	TE	SSF	Lima 150
<i>Selaginella suavis</i> (Spring) Spring	MD	SSF	Schwake 14739
<i>Selaginella sulcata</i> (Desv. ex Poir.) Spring ex Mart.	MD	SSF	Krieger s.n. (CESJ 11663)
<i>Selaginella tenuissima</i> Fée	MD	SSF	Krieger s.n. (CESJ 9064)
<b>Tectariaceae</b>			
<i>Tectaria pilosa</i> (Fée) R.C.Moran	TE	SSF	Krieger s.n. (CESJ 65997)
<i>Tectaria poeppigii</i> (C. Presl) C. Chr.	TE	SSF	Krieger s.n. (CESJ17104)
<b>Thelypteridaceae</b>			
<i>Amauropelta amambayensis</i> (Christ) Sa- lino & A.R.Sm.	TE	SSF	Lima 10
<i>Amauropelta neglecta</i> (Brade & Rosenst.) Salino & T.E.Almeida	TE	SSF	Krieger s.n. (CESJ 10759)
<i>Amauropelta oligocarpa</i> (Humb. & Bonpl. ex Willd.) Ching	TE	SSF	Krieger s.n. (CESJ 10721)
<i>Amauropelta opposita</i> (M.Vahl) Pic.Serm.	TE	SSF	Lima 07
<i>Amauropelta ptarmica</i> (Mett.) Pic.Serm.	TE	SSF	Garcia s.n. (CESJ 26063)
<i>Amauropelta regnelliana</i> (C.Chr.) Salino & T.E.Almeida	TE	SSF	Lima 19

<i>Amauropelta rivularioides</i> (Fée) Salino & T.E.Almeida	TE	SSF	Lima 24
<i>Christella dentata</i> (Forssk.) Brownsey & Jermy	TE	AE	Lima 12
<i>Christella conspersa</i> (Schrad.) A.R.Sm.	TE	MD	Roth s.n. (CESJ 1292)
<i>Christella hispidula</i> (Decne.) C.F.Reed	TE	MD	Krieger s.n. (BHCB 43990)
<i>Cyclosorus interruptus</i> (Willd.) K.Iwats.	TE	SSF	Lima 146
<i>Goniopteris vivipara</i> (Raddi) Brade	TE	SSF	Krieger 1175
<i>Macrothelypteris torresiana</i> (Gaudich.) Ching	TE	AE	Novelino s.n. (CESJ 29987)
<i>Meniscium arborescens</i> Humb. & Bonpl. ex Willd.	TE	SSF	Lima 99
<i>Meniscium longifolium</i> Desv.	TE	SSF	Krieger s.n. (CESJ 24530)
<i>Meniscium serratum</i> Cav.	TE	SSF	Lima 14
<i>Steiropteris decussata</i> (L.) A.R.Sm. var. <i>brasiliensis</i> (C.Chr.) Salino & T.E. Almeida	TE	SSF	Krieger s.n. (CESJ 3585)
<i>Steiropteris hatschbachii</i> (A.R.Sm.) Salino & T.E.Almeida	TE	SSF	Souza 371
<i>Steiropteris leprieurii</i> (Hook.) R.M.Tryon	TE	SSF	Belchior 23
<i>Steiropteris mexiae</i> (C.Chr. ex Copel.) Salino & T.E.Almeida	TE	SSF	Lima 51

**Table 2.** Comparison among studies that inventoried the Seasonal Semideciduous Forest (SSF) areas in the Atlantic Forest.

Reference	Locality	Vegetation formations	Area (ha)	Elevation (m)	Total of spp.
Present study	Juiz de Fora	SSF	142988	467-1104	181
Salino <i>et al.</i> 2013	Parque Estadual do Rio Preto	SSF and Cerrado	12000	750-1850	185
Colli <i>et al.</i> 2007	Reserva Estadual de Águas da Prata	Riparian Forest and SSF	48,40	840-1060	39
Colli <i>et al.</i> 2004a	Floresta Estadual de Bebedouro	Riparian Forest, Cerrado, and SSF	99,5	570	10
Colli <i>et al.</i> 2004b	Parque Estadual da Vassununga	SSF	1732	500-750	34
Souza <i>et al.</i> 2012	Serra Negra	Rain Forest, Highland Fields, and SSF	10000	900-1698	209
Figueiredo & Salino 2005	Patrimônio Natural ao Sul da Região Metropolitana de Belo Horizonte	Cerrado, Ferruginous Fields, and SSF	2280	850-1420	190
Melo & Salino 2002	Estação Biológica de Caratinga	SSF	880	400-680	102
Melo & Salino 2002	Parque Estadual do Rio Doce	SSF	35970	230-515	116
Melo & Salino 2007	APA Fernão Dias	Rain Forest and SSF	180	1000-2068	173
Nobrega & Prado 2008	Jardim Botânico Municipal de Bauru	Cerrado, Riparian Forest, and SSF	321,71	510-540	54
Senna & Kazmirczak 1997	Morro da Extrema. Porto Alegre	SSF	1031	Up to 255	45